



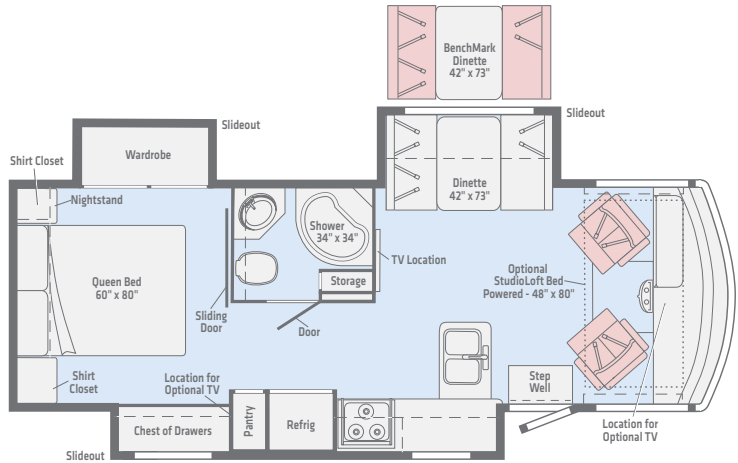
Everything you
love about the
Sunstar – and
more

No matter which of the spacious multi-slideout floorplans you choose, the Sunstar® LX rewards you at every turn with thoughtful touches to enhance your RV experience. Soft Primera® furniture, Corian® countertops and our own custom hardwood cabinetry welcome you home

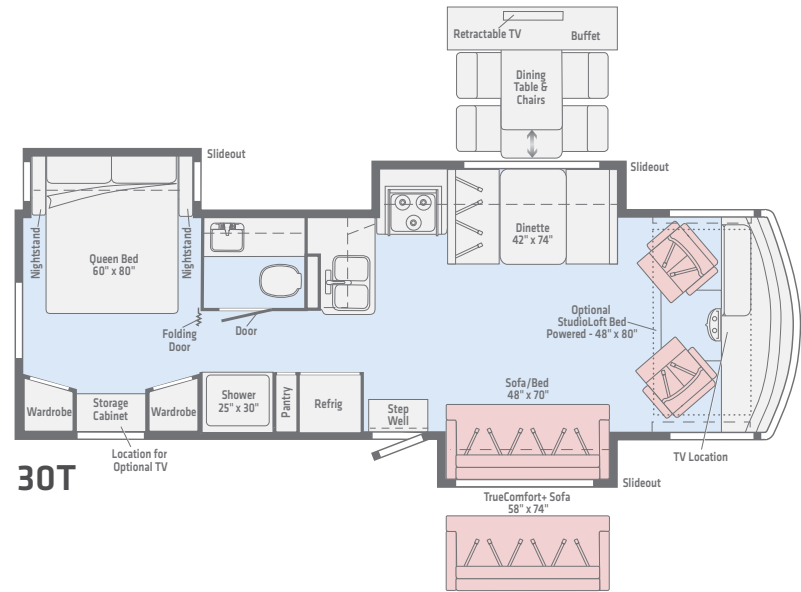
to your LX. The full galley and seating options make meals a pleasure, while the walkaround queen bed brings an added element of luxury to your private master bedroom. The Sunstar LX: the smart and affordable way to step up to the Class A lifestyle!

SUNSTAR LX

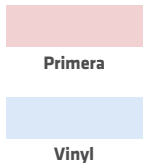
WINNEBAGO



27N



30T



Weights | Measures

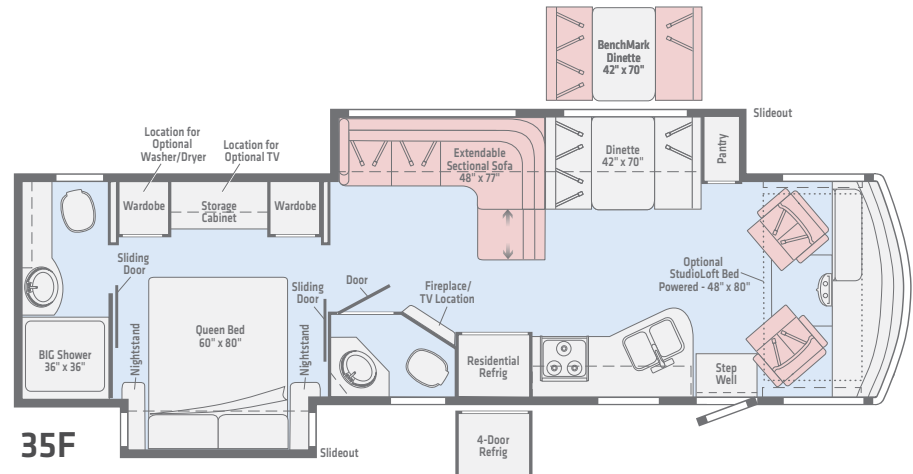
| | 27N | 30T | 35F |
|--|--------|--------|----------------|
| Length | 28'5" | 31' | 35'5" |
| Exterior Height ¹ | 12'2" | 12'1" | 12'5" |
| Exterior Width ² | 8'5.5" | 8'5.5" | 8'5.5" |
| Exterior Storage ³ (cu. ft.) | 123 | 118 | 137 |
| Awning Length | 19' | 19' | 16' |
| Interior Height | 6'8" | 6'8" | 6'8" |
| Interior Width | 8'0.5" | 8'0.5" | 8'0.5" |
| Freshwater Tank Capacity ⁴ (gal.) | 64 | 78 | 74 |
| Water Heater Capacity (gal.) | 6 | 6 | 6 |
| Holding Tank Capacity - Black/Gray ⁴ (gal.) | 43/53 | 41/42 | 41/51 & 21/NA* |
| LP Capacity ⁵ (gal.) | 18 | 18 | 18 |
| Fuel Capacity (gal.) | 80 | 80 | 80 |
| GCWR ⁶ (lbs.) | 23,000 | 23,000 | 26,000 |
| GVWR (lbs.) | 18,000 | 18,000 | 22,000 |
| GAWR - Front (lbs.) | 7,000 | 7,000 | 8,000 |
| GAWR - Rear (lbs.) | 12,000 | 12,000 | 15,000 |
| Wheelbase | 178" | 190" | 228" |
| Seating Capacity | 5 | 7 | 7 |

* The 35F uses separate black tanks for each bathroom

- The height of each model is measured to the top of the tallest standard feature and is based on the curb weight of a typically equipped unit. The actual height of your vehicle may vary by several inches depending on chassis or equipment variations. Please contact your dealer for further information.
- Floorplans feature a wide-body design - over 96". In making your purchase decision, you should be aware that some states restrict access on some or all state roads to 96" in body width. Before making your purchase decision, you should confirm the road usage laws in the states of interest to you.
- The load capacity of your motorhome is designated by weight, not by volume, so you cannot necessarily use all available space when loading your motorhome.
- Capacities are based on measurements prior to tank installation. Slight capacity variations can result due to installation applications.
- Capacities shown are tank manufacturer's listed water capacity (W.C.). Actual filled LP capacity is 80% of listing due to overfilling prevention device on tank.
- Actual towing capacity is dependent on your particular loading and towing circumstances which includes the GVWR, GAWR, and GCWR, as well as adequate trailer brakes. Please refer to the Operator's Manual of your vehicle for further towing information.

Not all items available in combination. See dealer for details.

Winnebago's® continuing program of product improvement makes specifications, equipment, model availability, and prices subject to change without notice. Published content reflects the most current product information at time of printing. Please consult your dealer for individual vehicle features and specifications.



35F