

**ACCESSIBILITY
ENHANCED** 



FORZA 34T AE

WINNEBAGO



Accessibility Enhanced Forza

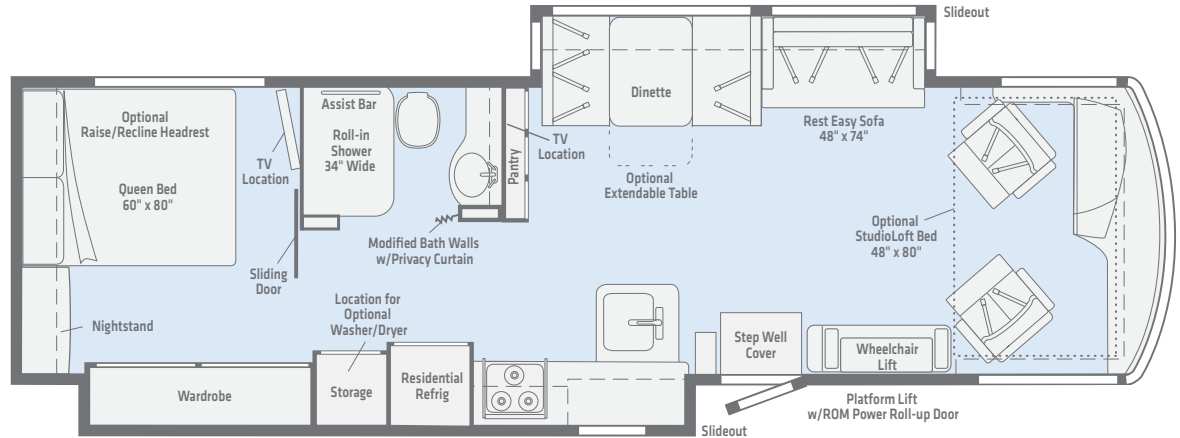
One of the few mid-entry diesel pusher motorhomes on the market, the upscale Forza® is ideally suited for Winnebago's accessibility enhancements. Designed to take full advantage of the 340-hp Freightliner XCS chassis, the Forza delivers a smooth, well-mannered ride with more luxury, space and power. And like all Winnebago diesel pushers, the Forza comes with a 3-year/100,000 mile warranty.

An Accessibility Enhanced Forza allows you to:

- Travel comfortably – and sleep in your own bed each night.
- Visit faraway places without the hassles of flying.
- Bring your pets or service animals along with you.
- Escape from the routine of everyday life and build lasting memories.

The following Accessibility Enhancements are available on the 34T AE floorplan:

- Platform wheelchair lift with 800-pound lifting capacity
- Powered roll-up lift door
- Wall-mount and key-fob remote controls allow wheelchair user to independently enter and exit the coach
- Expanded hallway and toilet areas for greater accessibility
- Large roll-in shower with assist bar and available folding bench seat
- Electric adjustable queen bed
- TV placement
- Microwave placement
- Remote-control roof vents
- Light and generator switch placement
- Faucet controls & adjustable showerhead
- Systems monitor placement
- Power transfer seat option



34T AE

Weights | Measures

	34T AE
Length	35'9"
Exterior Height ¹	11'11"
Exterior Width ²	8'5.5"
Exterior Storage ³ (cu. ft.)	153
Awning Length	17'
Interior Height	6'8"
Interior Width	8'0.5"

1. The height of each model is measured to the top of the tallest standard feature and is based on the curb weight of a typically equipped unit. The actual height of your vehicle may vary by several inches depending on chassis or equipment variations. Please contact your dealer for further information.
2. Floorplans feature a wide-body design - over 96". In making your purchase decision, you should be aware that some states restrict access on some or all state roads to 96" in body width. Before making your purchase decision, you should confirm the road usage laws in the states of interest to you.

3. The load capacity of your motorhome is designated by weight, not by volume, so you cannot necessarily use all available space when loading your motorhome. Not all items available in combination. See dealer for details.

Winnebago's continuing program of product improvement makes specifications, equipment, model availability, and prices subject to change without notice. Published content reflects the most current product information at time of printing. Please consult your dealer for individual vehicle features and specifications.

Winnebago quality. Winnebago support.

No one knows RVing like Winnebago. That's why smart RVers have chosen Winnebago for more than 60 years. Add to that our more than three decades of customization services for wheelchair customers and you'll see why a Winnebago Accessibility Enhanced motorhome is the right choice for you.

To learn more about how an Accessibility Enhanced Winnebago motorhome can open new horizons for you, please contact:

Winnebago Specialty Vehicles | 1-800-492-9135