

# Tour

## SNEAK PEEK

**WINNEBAGO**



## The Do-Everything Diesel

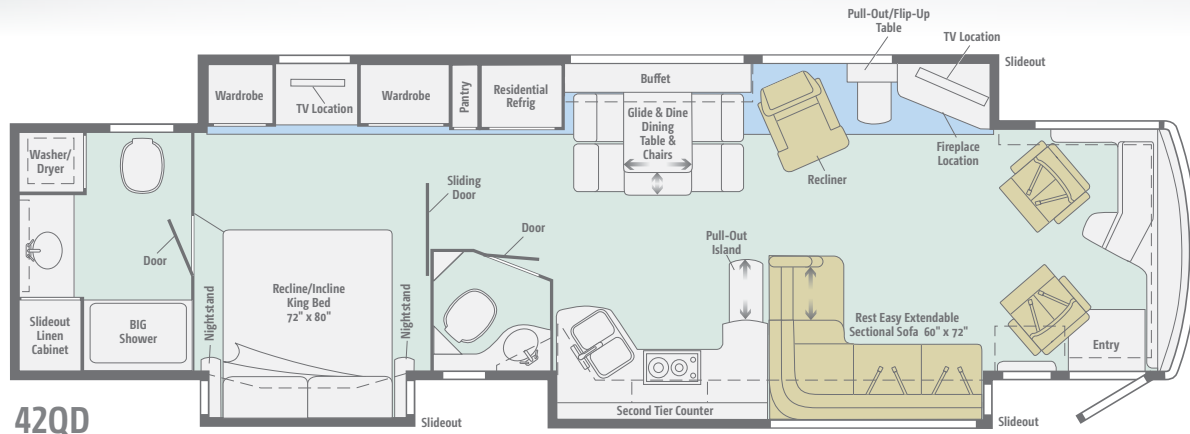
You'll love the look of your Tour.® Why? Because with four contemporary and four traditional exterior full-body paint schemes, four interior decor selections and three glazed cabinet woods, you'll get precisely the look you desire. But looks aren't everything, so the Tour backs it up with high-demand features such as the Glide & Dine™ dining table/buffet and multiple bathrooms. Several technologies have been added, including multiple USB connection points, an available 11-speaker JBL® Premium Cab Sound System and a 7" touchscreen OnePlace® multiplex systems control panel. It's all built on a tag-axle Maxum Chassis® for a smooth, powerful ride with unmatched storage capacity. The coach of tomorrow has arrived: the Winnebago® Tour.



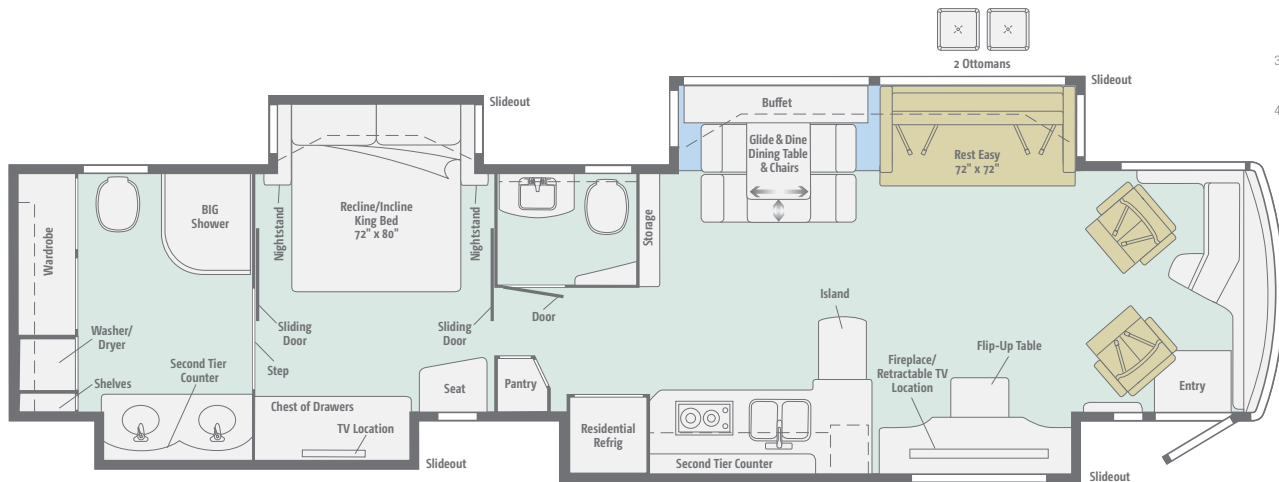
2016 MotorHome  
**READERS' CHOICE  
WINNER**  
**Class A**

# Floorplans & Specifications

Dimensions shown are for sleeping space only and may vary due to styling differences. Dashed lines denote overhead storage areas.



**42QD**



**NEW**  
**45RD**

Standard Ultraleather
  Carpet
  Porcelain Tile

Weights & Measures	42QD	45RD
<b>Length</b>	43'	44'
<b>Exterior Height<sup>1</sup></b>	12'11"	12'11"
<b>Exterior Width<sup>2</sup></b>	8'5.5"	8'5.5"
<b>Exterior Storage<sup>3</sup> (cu. ft.)</b>	196	210
<b>Awning Length</b>	14'6"/17'	16'/17'
<b>Interior Height</b>	7'	7'
<b>Interior Width</b>	8'0.5"	8'0.5"
<b>Freshwater Tank Capacity<sup>4</sup> (gal.)</b>	85	85
<b>Water Heater Capacity (gal.)</b>	Continuous	Continuous
<b>Holding Tank Capacity - Black/Gray<sup>4</sup> (gal.)</b>	51/71	51/95
<b>LP Capacity<sup>5</sup> (gal.)</b>	5.6	5.6
<b>Fuel Capacity (gal.)</b>	150	150
<b>GCWR<sup>6</sup> (lbs.)</b>	60,660	60,660
<b>GVWR (lbs.)</b>	45,660	45,660
<b>GAWR - Front (lbs.)</b>	15,660	15,660
<b>GAWR - Rear (lbs.)</b>	30,000	30,000
<b>Wheelbase</b>	279" + tag	291" + tag

- The height of each model is measured to the top of the tallest standard feature and is based on the curb weight of a typically equipped unit. The actual height of your vehicle may vary by several inches depending on chassis or equipment variations. Please contact your dealer for further information.
  - Floorplans feature a wide-body design - over 96". In making your purchase decision, you should be aware that some states restrict access on some or all state roads to 96" in body width. Before making your purchase decision, you should confirm the road usage laws in the states of interest to you.
  - The load capacity of your motorhome is designated by weight, not by volume, so you cannot necessarily use all available space when loading your motorhome.
  - Capacities are based on measurements prior to tank installation. Slight capacity variations can result due to installation applications.
  - Capacities shown are tank manufacturer's listed water capacity (W.C.). Actual filled LP capacity is 80% of listing due to overfilling prevention device on tank.
  - Actual towing capacity is dependent on your particular loading and towing circumstances which includes the GVWR, GAWR, and GCWR, as well as adequate trailer brakes. Please refer to the Operator's Manual of your vehicle for further towing information.
- Not all items available in combination. See dealer for details.
- Winnebago's<sup>®</sup> continuing program of product improvement makes specifications, equipment, model availability, and prices subject to change without notice. Published content reflects the most current product information at time of printing. Please consult your dealer for individual vehicle features and specifications.
- Visit us on [Winnebagold.com](http://Winnebagold.com).**